



HISTORICAL SERIES

Single Hung | Casement | Project Out | Floating Operator | Fixed



Products and Project References from the Historical Window Experts

www.QuakerCommercialWindows.com



Preserving traditional architecture is complex.

You know it, and at Quaker Windows & Doors, we know it too. Yet at Quaker, it's nothing new to us. It has been a specialty of ours for years. In fact, we like to think we're experts at making this challenging task an easy one.

For decades, developers, architects and historical consultants from across the country have consistently turned to Quaker for step-by-step assistance with their replication projects.

When it comes to being faithful to original window aesthetics, Quaker knows exactly what needs to be done and how to make it all work.

In this booklet, you will see dozens of treasured buildings that have been brought back to life, and Quaker has had the supreme honor of being a part of each. Amazingly, this isn't even close to covering all the historical projects containing Quaker windows. There are hundreds upon hundreds of others throughout the United States.

We encourage you to contact your Quaker sales representative or call our offices for more information on how Quaker can help you with your next historical renovation project.



HERRINGBONE LOFTS

(FORMERLY HOWARD CLOTHES COMPANY)

Philadelphia, PA Built: ca. 1920

Windows: Fixed with Floating Project-Out

The name Herringbone Lofts is a shout-out to the building's initial purpose -- making men's herringbone suits. Years later, in the 1980s, it would become an electrical supply warehouse. The building was terribly damaged when developers purchased it. A drawn-out and quite diligent renovation turned it into beautiful loft apartments. Quaker's floating operator system copied the large original steel windows to a tee.

credit: Herring Bone Lofts / herringbonelofts.com

The Quaker Difference: More than meets the eye.

What distinguishes Quaker from all other window companies isn't always in plain sight. It's The Quaker Difference -- tangible and intangible assets working together to form the most sought-after windows in the historical market.

- It's recognizing and respecting the fact that there are no "cookie-cutter" historical structures. Every building of age, sometimes every window within that building, has its own individual flavor.
- It's using stronger, heavier gauge aluminum which is especially important when replicating and replacing large windows.
- It's multiple quality checks utilized throughout the manufacturing process to guarantee a paramount product.
- It's shying away from testing at entry-level, gateway sizes. Instead, we test using exaggerated and even maximum sizing. This ensures that the entire scope of a product's sizing will meet the advertised rating.
- It's our state-of-the-art powder paint facility, one of the largest in the United States. Unlike manufacturers that outsource their painting, Quaker controls the quality and consistency of our finish in-house.
- It's our Manufacturing Specialists, some with more than 40 years of window experience, providing unparalleled attention to detail.
- It's the know-how and insight of our entire sales team, whose knowledge of our products is matched by their understanding of requirements and attributes necessary to attain National Parks Service approval.
- It's a standard of craftsmanship and engineering excellence that we build into every historical product, distinguishing us from all other window companies in America.
- It's doing more than just selling windows. It's finding the right window solution for your historical project.

That's *The Quaker Difference*.



GOLD MEDAL LOFTS

(FORMERLY GOLD MEDAL CAMP FURNITURE)

Racine, WI Built: 1894-1924

Windows: Project-Out, Single Hung,
Fixed & Arched Fixed

Built in phases over a 30-year period, this multi-structure site is where Gold Medal Camp Furniture manufactured cots and chairs for the U.S. Military and National Guard. As well, GMCF made director's chairs for Hollywood for many years. In 1986, the company consolidated and moved production from this plant to Tennessee, leaving the entire campus to sit idly until new ownership took over in the mid-teens of the 21st century. The successful renovation, which included more than 600 Quaker windows, turned it into loft-style apartments. The full project was completed in 2020, a year after the entire complex was added to the National Register.

credit: Roost Photography

Historical Architecture is not impossible to match.

It just takes experience and know-how. At Quaker, we have both. From the word "go", we devote special attention to every detail. We recognize and respect the fact that each project, sometimes each window, has its own individual flavor. The before-and-after examples below show how architectural brilliance can be reproduced with the assistance of Quaker.

HISTORICAL SOCIETY
(FORMERLY BANK OF FARMINGTON)
FARMINGTON, IL



**CALDWELL HALL –
CATHOLIC UNIVERSITY**
WASHINGTON, DC



THE TERMINAL
(FORMERLY PYLE-NATIONAL LIGHTING)
CHICAGO, IL



GOLD MEDAL LOFTS
(FORMERLY GOLD MEDAL FURNITURE)
RACINE, WI



BIGELOW COMMONS
(FORMERLY BIGELOW-HARTFORD CARPET MILL)
ENFIELD, CT



Historical Product Selection Guide

Model	Series	Frame Depth	Structural Test Rating	Test Size	Air Infiltration	Water Resistance	U-Value Range [#]	SHGC Range [#]	STC Range ^x	OITC Range ^x
Casement	H450	3 1/4"	CW-PG90	36" x 60"	<.30	up to 15	0.39-0.59	0.12-0.58	34-37	29-32
Project-Out	H450	3 1/4"	CW-PG90	60" x 36"	<.30	up to 15	0.39-0.59	0.12-0.58		
Single Hung	H650	4 1/8"	AW-PG60	60" x 99"	<.30	12	0.28-0.43	0.15-0.32	31-32	24-26
Fixed	H450	3 1/4"	AW-PG100	72" x 120"	<.10	up to 15	0.23-0.34	0.16-0.37		
	H650	4 1/8"	AW-PG90	60" x 99"	<.10	15	0.22-0.43	0.16-0.36		

[#]-U-Value and SHGC ranges are based on I.G. combinations incorporating some or all the following: Low-E glass, clear glass, argon gas and/or air fill, and grids
^x-Ranges based on multiple I.G. combinations
 All ratings listed are NAFS certified. Periodic re-certification testing is required thus data shown may vary slightly.



THE LOFTS AT CENTENNIAL YARDS

(FORMERLY SOUTHERN RAILWAYS HQ)

Atlanta, GA Built: 1912

Windows: Single Hung

More than a century ago, Atlanta was a boomtown for rail traffic. In 1912, Southern Railways, later known as Norfolk Southern, built two structures in "The Big Peach" -- a 3-story depot and 6-story office. In 1928, both were elevated to 8-stories and an enclosed walkway was added to connect the two structures. The complex was in use until 2005 when Norfolk Southern moved to midtown Atlanta. For a decade following, the structures stayed busy -- used for several film and TV productions including "The Walking Dead". Full renovations have since recast the complex into lofts, offices and retail spaces.

Credit: CoStar/Scott Harris

Single Hung Windows



Historic structures and hung windows just seem to go hand in hand. With their straightforward, vertical operation and adaptability to almost any architectural design, hung windows became quite a common choice of architects in the mid-1800s, and they have stayed in the architectural world's good graces ever since.



THE TELLER HOUSE (FORMERLY SHERIDAN TRUST & SAVINGS BANK)

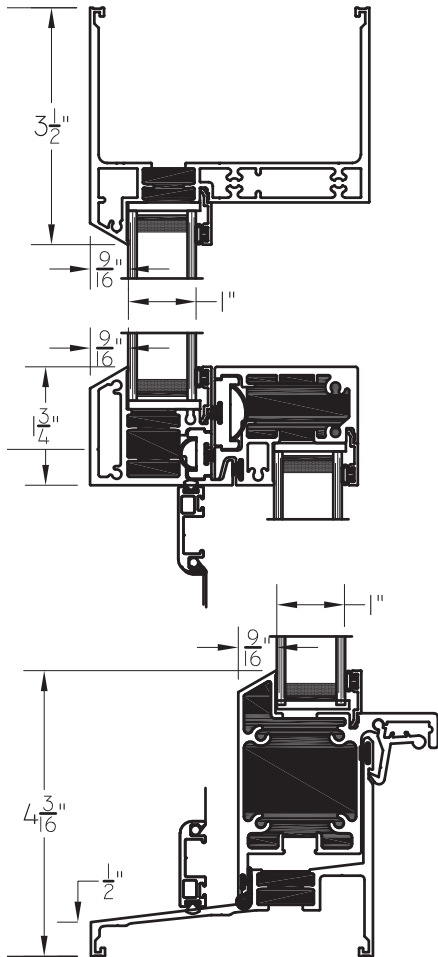
Chicago, IL Built: 1925-1928

Windows: Single Hung & Casement

A unique shape plus a terra cotta design give this Chicago landmark character from top to bottom. The building's configuration was designed to fit within a triangular block in uptown Chicago. Initially 8-stories tall, four more floors would be added later. The original owner, Sheridan Trust & Savings Bank, failed during the Depression. However, two other banks would keep this corner busy and relevant for the next 80+ years. Renovations have given this classical beauty a new lease as a mixed-use development.

Quaker Historical Single Hung Windows

H650 (AW60)



- 4 1/8" frame depth
- Distinctive, symmetrical sightlines
- 1" insulating glass
- SolidCore® thermal break system
- Gravity latch lock system
- Matching picture window
- Extruded aluminum screen with aluminum wire mesh
- Multiple panning, receptor and mull systems
- Finless main frame
- Optional ogee blocks to simulate historical appearance



THE WARRIOR HOTEL

Sioux City, IA Built: 1929-1930

Windows: Single Hung and Fixed

A lack of quality hotels in Sioux City in the late 1920s led to the development of The Warrior Hotel. Construction began in 1929. In spite of the stock market crash months later and ensuing economic woes, work continued and the hotel was completed in 1930. It was popular for 40+ years yet met a quick demise and closed permanently in mid-'70s. Almost a half century later, the vacant Historical Register member -- along with the Davidson Office Building next door which was built in 1913 -- were purchased by a major hotel chain who renovated both. They now house a hotel plus upscale apartments.



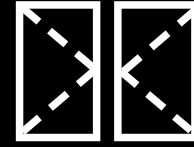
1912 BUNN (FORMERLY THE BUNN BUILDING)

Waycross, GA Built: 1912

Windows: Single Hung and Fixed

The first building in SW Georgia to incorporate fire-proof reinforced concrete was The Bunn Building. Ironically, it was an interior fire in 2019 that led to the structure's recent renovations. Today, the long-vacant office building has been transformed into affordable family housing.

Casement Windows



In many eyes, casements are often seen as the ultimate window for historical projects. They can be wide, thin, tall or short and always bring the slim sightlines and ageless appearances found in architecture from America's Gilded Age, Progressive Era and the Roarin' Twenties.



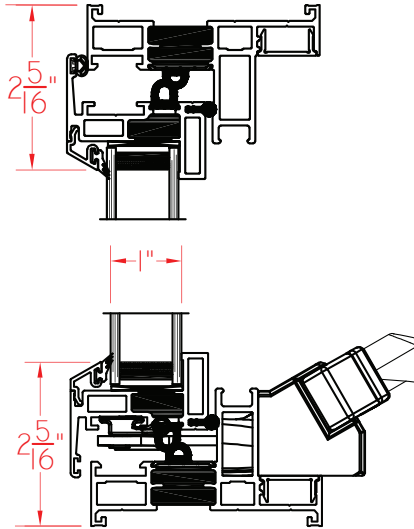
credit: The MacArthur - LA Conservancy

THE MACARTHUR (FORMERLY BENEVOLENT & PROTECTIVE ORDER OF ELKS) Los Angeles, CA Built: 1926 Windows: Casement & Fixed

This huge, 12-story edifice has always been a core building within Westlawn Park -- one of the most varied and prosperous neighborhoods in Los Angeles. Originally a private members club, The MacArthur has evolved over the years. It became a trendy event and performance venue in the 60s and 70s. By the 80s and 90s, it was a favorite stopping spot for progressive musicians and artists. All the while, it has carried a long-standing popularity with film studios as hundreds of movies, TV shows, commercials and music videos have been shot there. These days, The MacArthur's appearance has been refreshed by new Quaker H-Series windows. However, it still remains an epicenter for LA's diversity -- hosting events for local groups and large corporations, as well as a being a venue for music and the arts.

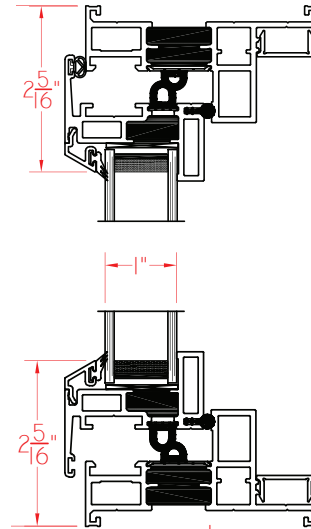
Quaker Historical Casement Windows

H450 Crank-out (CW90)



- 3 1/4" frame depth
- Distinctive, slim sightlines replicate steel-window appearance
- 1" insulating glass
- SolidCore thermal break system

H450 Push-out (CW90)



- Heavy-commercial locking system
- Matching picture window
- Multiple panning, receptor and mull systems
- Finless main frame



McKINLEY SCHOOL LOFTS

(FORMERLY MCKINLEY ELEMENTARY SCHOOL)

Milwaukee, WI Built: 1884-1889

Windows: Casement & Single Hung

According to the National Register of Historic Places, William McKinley Elementary School was built in phases over a 5-year period. Youngsters by the tens of thousands walked through its doors during a prominent 80+ year existence as a learning institution. The building got a reset in 2020, as developers turned it into loft apartments, with a portion of them specifically set aside for families of veterans.



THE EDISON

Pittsburgh, PA Built: 1920

Windows: Casement, Fixed and Single Hung

Pittsburgh's Innovation District is the home of Rockwell Park, a community that offers anything from studio apartments to large office spaces. Among those office spaces is The Edison, a former manufacturing facility which was named after Thomas Edison, one of Rockwell Park's founders. At 6-stories and 200,000 sq. ft., it is the 2nd largest facility on the campus and is now home tech businesses.

Project-Out Windows



Project-Out was a popular architectural window option during the late 19th and early 20th centuries. Simplistic yet efficient venting plus a flexibility to fit anywhere from the bottom floor to the penthouse made Project-Out windows the crux of many a design.



credit: Heritage Consulting / heritage-consulting.com

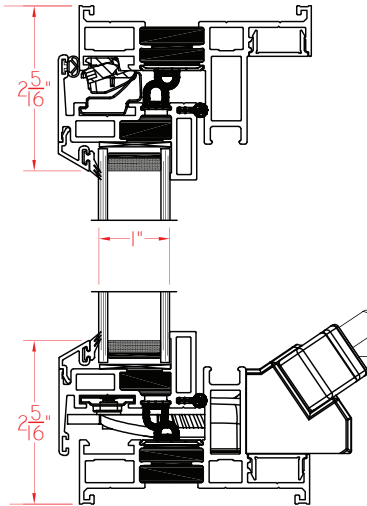
TRENTON MILL LOFTS (FORMERLY TRENTON COTTON MILL) Gastonia, NC Built: 1897

Windows: Single Hung, Fixed with Floating Project-Out, Geometric Fixed,
and custom break metal infill to replicate arched appearance

In 1920, Gastonia, NC was known as the "City of Spindles" because there were 30 textile mills there -- quite a few for a city with a population around 13,000 at that time. The Trenton Mill was Gastonia's second textile factory. It was quite significant in that it produced combed yarn -- a smoother, stronger version of yarn that was better for weaving and more comfortable for the wearer. Trenton Mill stayed in business for the better part of the century before eventually shutting down. After being vacant for a few years, the unique U-shaped building was reborn as loft apartments.

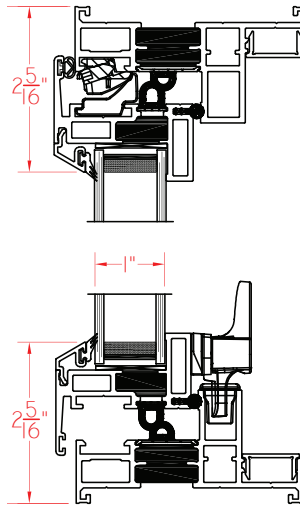
Quaker Historical Project-Out Windows

H450 Roto (CW90)



- 3 1/4" frame depth
- Distinctive, slim sightlines replicate steel-window appearance
- 1" insulating glass

H450 Push-Out (CW90)



- Finless main frame
- SolidCore thermal break system
- Matching picture window
- Heavy-commercial locking system
- Multiple panning, receptor and mull systems
- Main frame with or without nailing fin



THE DUFFEY LOFTS

(FORMERLY C. J. DUFFEY PAPER CO.)
Minneapolis, MN Built: 1923

Windows: Project-Out, Single Hung and Fixed

The earliest occupant of this building was George R. Newell & Company, a local grocery merchant. In the 1940's, C.J. Duffey Paper Company took over and was a mainstay in the Twin Cities until 2016. Developers have since given the 7-story building a total overhaul. That included the replacement of the large windows found on every level which gave employees plenty of natural light.



LOFTS AT FRANKLIN SQUARE

(FORMERLY O. M. EDWARDS COMPANY)
Syracuse, NY Built: ca. 1910

Windows: Project-Out & Fixed

When O.M. Edwards Co. built this 145,000 sq. ft., 6-story facility, they used it to manufacture their diverse product offering which featured windows for buses and railroad passenger cars, office furniture, phone booths, and padlocks. O.M.E. Co stayed until 1987. Jump ahead to 2023 when updates were implemented, including 1,100 new windows meeting historical criteria, in turn helping developers collect tax credits.

Fixed Windows



Whether paired with operating windows or set by themselves, non-operable fixed window units, sometimes referred to as picture windows, play a key role in breathing life back into nearly every storied structure being renovated.



CONWOOD FLATS

(FORMERLY AMERICAN SNUFF COMPANY)

Memphis, TN Built: 1909-1957

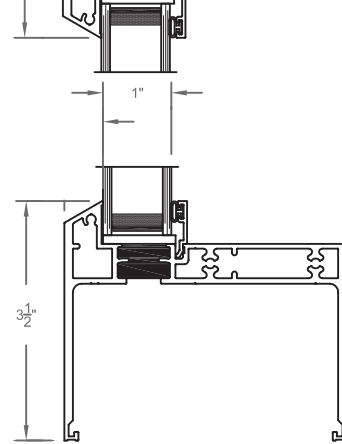
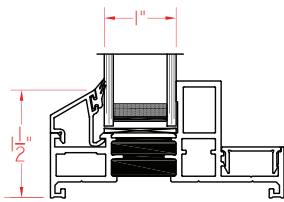
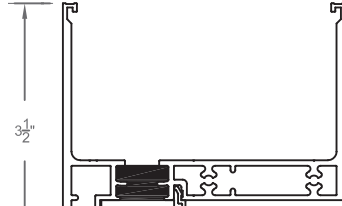
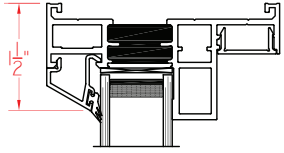
Windows: Fixed

Nine buildings made up what was once known as the American Snuff Company. Its strategic location -- in the appropriately named "Memphis Snuff District" -- allowed the company to flourish as their campus was near both rail and river transportation. At its peak in the mid-1950s, ASC had more than 500 employees and was the 2nd largest dry snuff manufacturer in the country. In 1966, the company changed its name to Conwood, LLC, only to change it back to ASC in 2010. However, the final name change was shortlived as the company decided to shut down the entire operation a year later. A full overhaul of the property has re-established it as a vibrant, uptown living complex. New apartments were also added to expand the development, which now goes by Conwood Flats in homage to previous ownership.

Quaker Historical Fixed Windows

H450 Fixed (AW100)

H650 Fixed (AW90)



- H450 Frame Depth - 3 1/4"
- H650 Frame Depth - 4 1/8"
- Distinctive, symmetrical sightlines
- 1" insulating glass
- Finless main frame
- SolidCore thermal break system
- Corresponding operating windows mate with each fixed window series
- Multiple panning, receptor and mull systems



credit: Blackberry Window & Door Systems

BOOK TOWER

Detroit, MI Built: 1926

Windows: Fixed and Single Hung

Contrary to Motor City lore, Book Tower was never a library, bindery, or publishing office. It was named after three brothers named Book who commissioned it in the early 1920s. Once built, the 38-story, 475' tall skyscraper immediately became the city's tallest building. It was imposing and hard to ignore, and it became a bustling business center for decades. Book Tower was named to the National Register in 1982. For more than 25 years, a revolving door of owners, each with renovation ideas, came and went. That ended in 2015 when a local real estate company and a New York architectural firm purchased Book Tower and began a huge renovation from top to bottom with a goal of turning it into retail, office space, residential and hospitality. Nearly 2,500 of Quaker's historically-correct windows were an extensive part of Book Tower's revival.



credit: MHA Works / mhaworks.com

THE RESTORATION ASHEVILLE

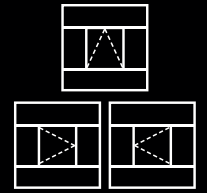
(FORMERLY BANK OF ASHEVILLE)

Asheville, NC Built: 1972

Windows: Fixed

On one of the busiest streets in Asheville sets a former bank that has been rejuvenated as a boutique hotel. The building has always been a familiar sight in Asheville's lively and eclectic downtown area. Quaker's H-Series windows were part of a recent window renovation to refresh the landmark's neo-classic appearance.

Floating Operator Windows



Nothing says "historic industrial building" like sizable, multi-lite steel windows with a single operating window in the center. Quaker's historical products can replicate that appearance using a singular main frame featuring a Project-Out or Casement window floating amid surrounding fixed units, hence the term "Floating Operator".



credit: Long Architectural

MAKERS MARK DISTILLERY

Loretto, KY Built: ca. 1880

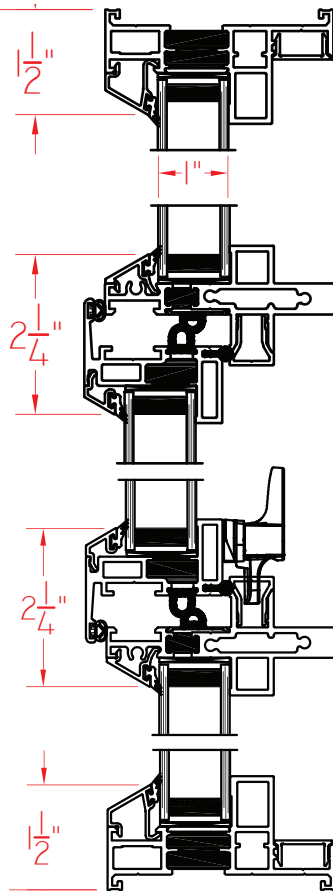
Windows: Casement and Fixed with Floating Project-Out

Just outside of the small town of Loretto, KY sets the campus of one of the most recognizable names -- and bottles -- in the bourbon industry. The buildings found on the Maker's Mark compound were all built in the 1880s by the original property owner and distiller. That distillery shut down during prohibition but years later, 1953 to be exact, the Samuel family purchased the site and soon began making their own brand of bourbon. The distillery would later be added to the National Register (1974) and designated a National Historic Landmark (1980). While all buildings on the campus will eventually have windows replaced, the first structure completed in 2019 houses the cookers and fermentation tanks.

Quaker Historical Floating Operator Windows

H450 Series

- 3 1/4" frame depth
- 1" Insulating Glass
- Distinctive, symmetrical sightlines
- Continuous main frame without fins
- SolidCore® thermal break system
- Many fixed/operable combos available
- Optional screen with wicket door access
- Multiple panning and receptor systems



OVERMYER BUILDING

(FORMERLY OVERMYER WHOLESALE GROCERIES)

Toledo, OH Built: 1912-1917

Windows: Fixed with Floating Project-Out
 The Overmyer Building was built in 2 phases. Initially, it was just 4-stories and housed Overmyer Company, a local wholesale grocery firm. Four more stories were added later. The structure was later home to Commerce Paper for a short time. Renovations have recently made this former warehouse into a mixed-use facility.



THE ASSEMBLY

(FORMERLY FORD MOTOR ASSEMBLY PLANT)

Indianapolis, IN Built: 1914

Windows: Arch Fixed, Fixed with Floating Project-Out

As motor car popularity grew in the early 1900s, Ford Motor Company decided to build this assembly plant in Indianapolis. Production at the new plant exceeded expectations quickly. By 1923, it was rolling out 85,000 vehicles a year. But when the Great Depression hit, the Indy plant became a casualty, closing in 1932. Decades later, after years of non-use and little maintenance, the structure had become an eyesore. That changed in 2017 when a development firm bought the property and eventually transformed it into a mixed-use facility, gaining national accolades for their work.

Custom Shape Windows

Builders, architects and craftsmen from years ago frequently integrated unique window shapes into their designs to set their work apart. Quaker sets itself apart too by being able to mold historically-correct fixed and operating units into eye-popping, geometric replications.



credit: Blackberry Window & Door Systems

JACK ENTERTAINMENT (FORMERLY ST. MARY'S SCHOOL)

Detroit, MI Built: 1868

Windows: Arch Head Single Hung

After sitting empty for nearly a decade, the old St. Mary's School in Detroit's Greektown neighborhood, was reinvented as the headquarters for a casino ownership group. The structure, built shortly after the Civil War's end, served not only as a school, but also as an orphanage. It was also a full-time residence for Catholic sisters. In 1966 the school closed, and it became St. Mary's Community Center for several years. The building has since been recognized as an official historic site by the state of Michigan. Restorations included replacing the tall, arched hung windows with Quaker historical windows.

Quaker Historical Custom Shape Windows



Many more custom
geometric shapes
are available



THIRTYONE ELM APARTMENTS

(FORMERLY COURT SQUARE HOTEL)

Springfield, MA Built: 1892

Windows: Single Hung, Fixed, Quarter Round Fixed, Oval Fixed, Extended Quarter Round Fixed, Arch Head Fixed, Chord Fixed

Set in Springfield's historic Court Square district, this was originally a 5-story hotel with a theatre. A sixth story was added in 1900. In 1930, the Court Square Hotel's function changed -- it switched to an office building, although the theatre would remain. After being empty for almost 25 years, a massive renovation plan was put in motion in 2022. Among the building's 1,400+ windows were 5 different geometric shapes. Quaker supplied them all, masterfully duplicating the numerous configs.



CREAM CITY LOFTS

(FORMERLY GEORGE BURNHAM BLDG. & ASCHERMAN CIGAR FACTORY)

Milwaukee, WI Built: 1873

Windows: Single Hung, Half Round Single Hung, Fixed

This is one of the most interesting historical buildings in Milwaukee's Walker Point neighborhood. Less than a decade after the American Civil War ended, it was commissioned by the owner of Cream City Brick, a well-known local manufacturer. Later the building would become a local hit as Ascherman's Cigar Factory. While above ground it stands 4-stories tall, 20' below ground lies the hull of a wrecked steamship which was used as foundational fill. A 2020 renovation, featuring Quaker H-Series arch head single hung windows, turned the structure into luxury loft apartments.



LINNEAN HOUSE - MISSOURI BOTANICAL GARDENS

St. Louis, MO Built: 1882

Windows: Single Hung, Half Round Single Hung, Arch Head Single Hung

The Linnean House is the oldest continuously operating public greenhouse west of the Mississippi River. It was designed to be an "orangery", a special greenhouse to keep citrus trees protected in the winter. It became a more traditional greenhouse after WWI. Window renovations in 2020 saw Quaker address a number of items: building extremely tall and wide hung windows, applying geometric SDLs, providing a custom color, customizing a panning die to copy the original architectural design, and matching soft arches and half round geometric shapes. Quaker furnished it all.

Accessories

Replicating Every Aspect

Very few classic buildings ever don the same architectural design. Fortunately, that's never an obstacle for Quaker. With decades of experience supplying historically-accurate accessories, we can provide a multitude of installation accessories such as panning, trim, subsill/receptor, and break metal -- even custom, job-specific accessory dies when necessary.



Credit: McGinn Photography

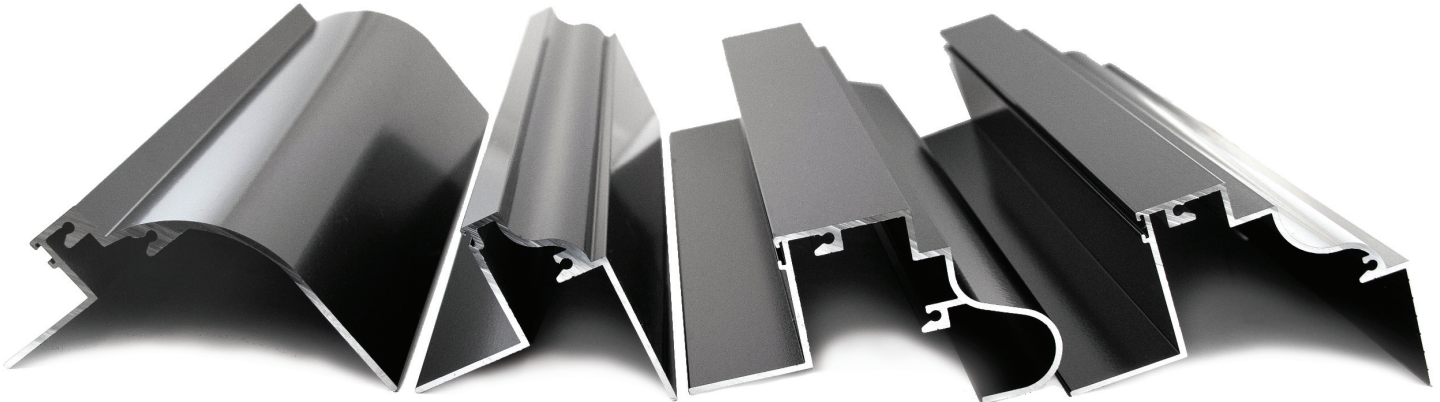
CROSTOWN CONCOURSE (FORMERLY SEARS CROSTOWN BUILDING)

Memphis, TN Built: 1927

Windows: Fixed with Floating Project-Out

A mere 180 days after construction began, Sears Crosstown opened -- a remarkably efficient feat considering it was 14 stories tall and covered 1.5 million sq. feet. By the mid-1990s, operations there had ceased, leaving what was once the largest building in Memphis completely empty. Developers were told to knock this National Register member down but resisted and soon embarked on a massive renovation project which included 3,200+ windows. Seven custom dies were necessary. The result was tabbed as the largest historic adaptive re-use, LEED-Platinum project in the world. The Art-Deco gem is now a mixed-use, vertical urban village i.e. "a city within a city". More than 3,000 people live, work or make their way through the building daily.

Quaker Historical Accessories



This is a sampling of the many historical panings and accessories Quaker has available. Custom profiles available.



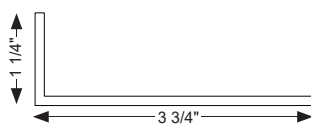
ST. AUGUSTINE HIGH SCHOOL

New Orleans, LA Built: 1951

Windows: Impact-Rated Project-Out & Fixed

When built, this school became an all-boys, educational facility for New Orleans' African-American populace. Famous alumni over 7+ decades include multiple actors, musicians, NFL and NBA players, state politicians, and the 2nd African-American mayor in New Orleans' history. School renovations and additions in 2021 incorporated Quaker H-Series windows, which were also Impact-rated -- designed to meet ASTM 1886 (Large Missile Impact - Level D) testing requirements. Impact calculations were performed by Quaker pre-install so that proper anchorage accessories would be included.

St. Augustine High School Impact Trim



credit: Stehli Mill Lofts

THE LOFTS AT STEHLI SILK MILL

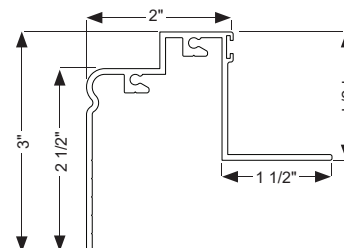
(FORMERLY STEHLI SILK MILL)

Lancaster, PA Built: 1897

Windows: Single Hung, Project-Out, Fixed & Fixed Circle

When it was completed, Stehli Silk Mill's Lancaster location was the world's second largest silk mill. The huge mill had almost 2,100 employees at its peak, and 10 acres under roof. Alas, the Mill's relevance faded and operations ceased in 1953. The National Register member has been reborn as loft apartments with the help of Quaker H-Series windows, a custom designed panning die, and custom break metal to infill the soft arches above each window.

Stehli Silk Mill Custom Panning Die



Glass and Grids

Countless Configurations

Whether glass specs call out sound control, safety necessities, thermal values, special tints, custom grid bars, or custom grid patterns - or a combination of some or all - Quaker has the products and know-how to accommodate your project requirements.



Credit: Crexi.com

THE MILTON

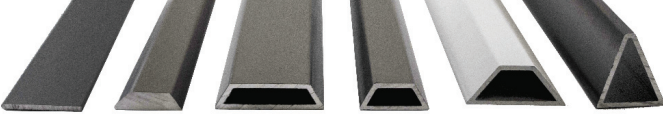
(FORMERLY OLD-MERCHANTS NATIONAL BANK & TRUST CO.)

Battle Creek, MI Built: 1931

Windows: Fixed with custom grid

Back in the 1830s, Milton Township was the name of the settlement that would eventually become Battle Creek. Hence, developers chose The Milton as the name for Battle Creek's Old-Merchants National Bank & Trust building. Found on the National Register, the Art-Deco, 19-story structure was a beehive of activity for many years as Old-Merchants Bank was the preferred financial institution for several of the large cereal companies in the area. Surprisingly, the early 21st century saw the structure sit unused for 10 years. The idle time led to a heavy dose of deterioration until a local development group launched renovations in 2019 and remade it into a mixed-use facility. New Quaker historical windows with custom grids were a large part of the 3-year project, which was given a 2023 Building Award from the Michigan Historical Preservation Network.

Applied Grid Profiles



Grid profiles shown above are just a sampling of the many Quaker has available. Custom profiles available.

Glass Choices

- Pane thickness: $\frac{3}{32}$ ", $\frac{1}{8}$ " $\frac{5}{32}$ ", $\frac{3}{16}$ ", $\frac{1}{4}$ ", $\frac{5}{16}$ "
- I.G. thickness: 1" (2-pane), $1\frac{3}{8}$ " (triple pane)
- Glass Types: Dual Silver Low-E, Triple Silver Low-E, Interior Pane Low-E, Tempered Safety Glass, Laminated, Spandrel, Solar-Cooled, Obscure (for privacy), Bird Glass, Tints, and more



812 LOFTS

(FORMERLY CHURCHILL'S DRUG CO.)

Peoria, IL Built: 1917

Windows: Project-Out & Fixed

The tallest building in the National Register's Peoria Warehouse District, it has now been redeveloped as loft apartments. Historically-correct Quaker windows and retro-matching grids can be found throughout.



TECHWORKS

(FORMERLY JOHN DEERE TRACTOR CO.)

Waterloo, IA Built: 1928

Windows: Fixed with custom grid

John Deere built this manufacturing plant for their GP (General Purpose) tractor model. Forge ahead to the current times and the building now hosts several tech businesses. Renovations included huge Quaker fixed windows with a custom grid design, incorporating wider SDL bars to simulate operable units.



credit: Northwest Oklahoma State Univ.

RYSERSON HALL NW OKLAHOMA STATE UNIVERSITY

(FORMERLY FINE ARTS BUILDING & SCIENCE HALL)

Alva, OK Built: 1906-1907

Products: Single Hung, Fixed, Arch Head Fixed & Elliptical Fixed

with custom Black Spandrel glass in all transoms

This structure has been updated and renovated several times over the years to meet the changing educational landscape of NWOSU. The most recent work saw new Quaker windows added, customized with a special SDL grouping. Within all the transom windows, black spandrel glass was added for aesthetics, privacy and sun protection.

Colors and Finishes

The Possibilities are Endless



Don't let the necessity for a specific color stop your project. Along with our 30+ "Quick-Pick" colors at your fingertips, **ANY** color in the spectrum is available with our custom color capabilities. Choose between a 2604 standard finish or 2605 upgrade finish for most colors.



credit: Frank Capasso & Sons / frankcapassoandsons.com

COLT GATEWAY (FORMERLY COLT EAST ARMORY)

Hartford, CT Built: ca. 1865

Windows: Project-Out, Fixed and Single Hung **Colors:** Holly Green, Colt Green (Custom) & Legacy Grey (Custom)

Around the end of the Civil War, the widow of Colt firearm inventor and industrialist Samuel Colt, ordered this 6-story armory to be built in the exact same place where the original Colt Armory had burned down a year earlier. Once done, it was larger, more fireproof and more decorative with an Italian-Renaissance look. In addition, the new Colt Armory carried over the most dramatic feature of the original; the blue onion dome with gold stars, topped by a gold orb - the undisputed Colt symbol. Colt Mfg. occupied the building until 1994 when it consolidated operations with their West Hartford location. Today, the armory has been transformed into something completely different; a live/work community that contains residential and commercial spaces. The project used three colors as it pertained to windows. Some windows were painted Quaker's popular Holly Green. However, a majority showcased one of the two custom colors requested.

Quaker Colors and Finishes



SLATE HOTEL

(FORMERLY EMILY GRIFFITH OPPORTUNITY SCHOOL)

Denver, CO Built: 1915-1956

Windows: Single Hung

Color: Light Breeze (Custom)

Emily Griffith was a prominent Denver educator in the early 1900s. It's thought that almost two million people received an education at the trade school that carries her name. One of the buildings on the EGOS campus was recently re-energized when it became an upscale hotel. Along with supplying historical windows, Quaker developed a custom color to match their brand guidelines.



ALLIED ARTS BUILDING

Lynchburg, VA Built: 1929-1931

Windows: Project-Out & Fixed

Color: Oregon (custom)

Erected over a 2-year period during the onset of The Great Depression, Lynchburg's Allied Arts Building was a busy office and professional space for many years. The Art-Deco skyscraper was 17 stories and the tallest building in Lynchburg for decades. Its significance faded late in the century, yet its historical value was never questioned, as evidenced by its addition to both the Virginia Landmarks Register and the National Register. A redevelopment plan kicked off in 2019 and was completed approximately 2 years later. A custom window color to parallel the structure's greenstone base, and compliment the yellow brick, was requested, and Quaker delivered an exemplary match.



TRUE REFORMER BUILDING

Washington, DC Built: 1902-1903

Windows: Single Hung, Project-Out, Fixed & Extended Half Round

Color: Dark Bronze with Optional 2605 Finish

This 4-story building was the first in the U.S. to be completely designed, built, financed, and owned by the African American community after Reconstruction. In 2021, renovations were made. Because DC temps can occasionally hit single digits in the winter and triple digits in the summer, plus humidity always seems to be high, an upgraded 2605 paint finish was specified to provide better, year-round weatherization.

LEED Certification

More than ever, professionals in the historical field are looking beyond finding an exact window replica. In the name of LEED, they want better "Green" performance too. U-values, Solar Heat Gains, Recycled Material Percentages -- these have taken on prized importance. Quaker's Historical product family has the make-up to help generate LEED point possibilities.



Credit: BelleCitySquare.com

THE WILLIAM (FORMERLY HORLICK'S MALTED MILK COMPANY) Racine, WI Built: 1882-1910 Windows: Single Hung and Fixed

William and James Horlick had this structure built in the 1880s to house the making of their newly-invented product known as malted milk. Malted milk would go on to become a great success, not only in the U.S. but in many other countries around the world. Eventually, a total of fourteen buildings would make up the entire Horlick Malted Milk Company campus in Racine. Four of them have been added to both the Wisconsin State Register and the National Register. That includes this 3- and 4-story Gothic Revival structure. Although the company was thriving, it began selling some of their buildings on this complex in the 1950s. By 1975, all of Horlick's buildings in Racine had been sold to various entities. In late 2019, after years of vacancy, developers began a meticulous refurbishing process for what is now known as The William -- a large apartment community named after one of its original owners. The project also garnered acclaim as a LEED Gold recipient.

Quaker Window Products, Inc. does not make any guarantee of LEED-accreditation or Level Certification with the use of Quaker products.



1-800-347-0438



credit: tribecacitizen.com



BEEKMAN RESIDENCES

(FORMERLY TEMPLE COURT)

Manhattan, NY Built: 1881-1883

Windows: Single Hung

From the get-go, this 10-story belle was a busy office building, with major tenants such as the NRA occupying space. Soon after, Temple Court really hits its stride, becoming home base for 200+ white collar businesses such as lawyers, publishers, press agents, and accountants. It remained an office building into the early 2000s. After a dozen vacant years, the building got a reboot as a LEED-certified luxury hotel and apartments.



credit: Drury Hotels



DRURY PLAZA BROADVIEW

(FORMERLY BROADVIEW HOTEL)

Wichita, KS Built: 1922

Windows: Single Hung

Built along the banks of the Arkansas River, The Broadview quickly became a popular stop along the Chisholm Trail, as well as a terminal for the Arkansas Valley Interurban Railroad. During Prohibition, The Broadview basement was the town's only "speakeasy". And since Wichita is known as the "Air Capital of the World", it is apropos that famed pilots Amelia Earhart and Charles Lindbergh were once hotel guests. Beginning in 1940, ownership of the building changed hands many times. Eventually, the Drury Hotel chain renovated the handsome structure, building a multitude of green features into the rehab, earning LEED certification.



credit: ruckertmielke.com

GLOBAL WATER CENTER

(FORMERLY MOLITOR PAPER BOX FACTORY)

Milwaukee, WI Built: 1904

Windows: Fixed

Sitting amid Milwaukee's historic Florida & 3rd Industrial Ward, this 7-story brick structure was the tallest building in the district when it was completed. It was built for Molitor Paper Box Factory. Renovations have now turned the building into the LEED-Silver Global Water Center. It is the world headquarters for The Water Council, as well as other water-related businesses and research companies.

More LEED-certified historical projects containing Quaker windows:

LEED Platinum

- @4240 - St. Louis, MO (former Southwestern Bell Telephone)
- Crosstown Concourse - Memphis, TN (former Sears Building)
- Green Exchange - Chicago, IL (former Cooper Lamps)

LEED Gold

- Capewell Lofts - Hartford, CT (former Capewell Horse Nail Co.)
- Power House Building - St. Louis, MO

LEED Silver

- The Arabella - Racine, WI (former Horlick Malted Milk Plant)
- Cupples Station #1 - St. Louis, MO
- The Laurel - St. Louis, MO (former Stix, Baer & Fuller Dept. Store)

LEED Certified

- Brew House - Milwaukee, WI (former Pabst Brewing)
- Drury Plaza - Santa Fe, NM (former St. Vincent's Hospital)
- Kaley Center - Wheeling, WV (former Riley Building)
- Mary Leila Lofts - Greensboro, GA (former Mary-Leila Cotton Mill)
- McCabe Hall, Marquette University - Milwaukee, WI
- Shoreland Apartments - Chicago, IL (former Shoreland Hotel)
- Studio Gang Architecture - Chicago, IL (former Polish National Alliance Building)
- W. G. Pearson Magnet School - Durham, NC (former Hillside High School)

Renovation Realized

Find Quaker in these recently completed or on-going historical projects.

ALABAMA

- Macaroni Lofts - Birmingham (former Birmingham Macaroni Co.)

ARKANSAS

- AC Hotel - Little Rock (former Hall-Davidson Bldg.)
- Administration Bldg. - Fayetteville

CALIFORNIA

- Tru Bankers Hill - San Diego (former Rees-Stealy Med. Clinic)
- V.A. Building 207 - West Los Angeles (former V.A. Hospital)
- Vertigo Hotel - San Francisco (former Empire Hotel)

CONNECTICUT

- Barnum House Apts. - Bridgeport (former Barnum Hotel)
- Cherry Street Apts. - Waterbury (former Waterbury Clock Factory)

GEORGIA

- 11th Street YMCA - Columbus
- Edgewood Center - Snellville (former Coca Cola Bottling Plant)

ILLINOIS

- 630 W. Arlington - Chicago (former U.S. Cold Storage)
- 2055 W. Pershing Rd. - Chicago (former mfg. facility)
- Adams & Oak - Peoria (former Federal Company Wrhse.)
- Army Corps of Engineers District Bldg. - Rock Island
- Broadview Apts. - East St. Louis (former Broadview Hotel)
- CA Flats - Rockford (former office building)
- Goldblatt's Building - Chicago (former Goldblatt's Dept. Store)
- Lofts on the Square - Belleville (former Hotel Belleville)
- Schoolhouse Apts. - Elgin (former Wing School)
- Water & Power Lofts - Rockford (former Rockford Brassworks)
- Winkler Lofts - Peoria (former Winkler Meats)

INDIANA

- Ascend Hotel - Elkhart (former Hotel Elkhart)
- Backstay Lofts - Union City (former Backstay Welt Mfg.)
- Historic Walnut Square - Terre Haute
- Journeyman Distillery - Valparaiso (former Woolen Mill Factory)
- Miller Parrot Lofts - Terre Haute (former Miller Parrot Bakery)

IOWA

- 220 E. 9th - Dubuque (former Kretschmer Mfg. Co.)
- Blue Bird Flats - Sioux City (former Motor Mart Bldg.)

KANSAS

- Leavenworth Local Hotel - Leavenworth (former Immaculata High School)
- Y Lofts - Kansas City (former YMCA of KCK)

KENTUCKY

- 429 W. Muhammad Ali Blvd. - Louisville (former Republic Bldg.)
- 2001 Frankfort - Louisville (former KY School for the Blind)
- American Printing House for the Blind - Louisville
- Hughes Lofts - Louisville (former Fetzer Bldg.)

MARYLAND

- Foundry Lofts - Baltimore (former Bell Foundry)
- Ministry of Brewing - Baltimore (former St. Michael's School)
- WRH Apts. - Baltimore (former Brewers Hill Warehouse)

MASSACHUSETTS

- 12-16 McLellan St. - Dorchester
- Blue Mountain Apartments - Dorchester
- Central Building - Worcester
- Loftel Boston - Boston (former industrial factory)
- The Chocolate Factory - Mansfield (former Lowney Chocolate)
- The Overlook - Weymouth (former shoe factory)

MICHIGAN

- 40 Hague - Warren (former Packard Auto Showroom)
- 950 Selden - Detroit (former Jefferson School)
- Dreamtroit - Detroit (former Warren Motor Car Co.)
- Emerald Flats - Grand Rapids (former Eastern Elem. School)
- Hilton Garden Inn - Flint (former Genessee Savings Bank)
- Park Avenue Bldg. - Detroit (former Gen. Necessities Bldg.)
- Peerless Building - Detroit (former factory building)
- Temple Hotel - Detroit (former Standard Accident Insurance Co.)

MINNESOTA

- BIMOSDAA - Minneapolis (former Film Exchange Bldg.)
- Summit Terrace Flats - St. Paul (former 610-616 Summit Apts.)
- LorWest Apts. - St. Paul (former Cathedral Hill Apts.)

MISSOURI

- 21C Hotel - St. Louis (former YMCA)
- 1500 St. Louis Ave. - Kansas City (former Ryley-Wilson Grocers)
- 2647 Locust - St. Louis (former Schwab Clothing Co.)
- Hutcheson Arms - St. Louis
- Lofts at Hupp - St. Louis (former Weber Implement & Auto)
- Lyon School Apts. - St. Louis (former Lyon School)
- STL City Soccer Club HQ - St. Louis (former Union Sq. Plaza)
- St. Regis Apts. - Kansas City (former St. Regis Hotel)
- The Nash - St. Louis (former Nash Bldg.)
- West Bottom Flats - Kansas City (former Abernathy Furniture)
- Zhou B. Art Center - Kansas City (former Crispus Attucks School)

NEW JERSEY

- The Modern @ Mill One - Trenton (former Strauss Woolen Mills)

NEW YORK

- 346 Austin St. - Buffalo (former Buffalo P.D. Precinct 13)
- 64 Jermain - Sag Harbor (former Schiavoni Plumbing & Htg. Co)
- Commonsplace Warren - Syracuse (former Ch. of Comm. Bldg.)
- Monroe County Office Bldg. - Lancaster
- St. Catherine's Center for Children - Albany



WILSON LOFTS

(FORMERLY CLINTON BRIDGE & IRON WORKS)

Clinton, IA Built: 1914

Windows: Single Hung, Fixed, & Geometrics

1-800-347-0438



Credit: Capstone Real Estate

GREYHOUND OFFICE BLDG.
 (FORMERLY GREYHOUND BUS DEPOT)
 Birmingham, AL Built: 1941-1951
 Windows: Project-Out, Fixed, Fixed Circle

NORTH CAROLINA

- Blue Bell @ Lenoir Mills - Lenoir (former Lenoir Cotton Mill)
- Johnston Mill Apts. - Charlotte (former Johnston Textile Mill)
- MOJUD Lofts - Greensboro (former Hosiery Mill)
- Newry Mill Apts. - Seneca (former Newry Textile Mill)
- The Lofts on Haw River - Haw River (former granite mill)
- Spinning Mill Apts. - Clayton (former Clayton Spinning Mill)
- Suites at 57 South - Concord (former Cabarrus Savings Bank)

NORTH DAKOTA

- Historic Apts. on 4th - Mandan (former Mandan Junior H.S.)

OHIO

- Castle Block Apts. - Ashtabula (former Castle Block Dry Goods)
- Edison 777 - Columbus (former Columbus Welding Shop)
- Feick Building - Sandusky
- Fort Industry Square - Toledo
- Franklin County Memorial Hall - Columbus
- Graphic Arts Lofts - Dayton (former printing/publishing whrse.)
- Huffman Place - Dayton (former Huffman Block Bldg.)
- Liberty Textile Building - Cleveland
- Spooky Nook - Hamilton (former Champion Paper Mill)
- Sycamore Place at St. Xavier Park - Cincinnati (former Krippendorf & Dittman Shoe Co.)
- The Lofts at WB - Toledo (former Wonder Bread Factory)

OKLAHOMA

- The Harmony - Oklahoma City (former Harmony Public School)

OREGON

- Hanby Middle School - Gold Hill
- Medford Middle School - Medford (former Medford H.S.)
- V.A. Health Care System Facility - Roseburg

PENNSYLVANIA

- 1100 N. Delaware - Philadelphia (former Edwards Corner)
- 147 Berkley - Philadelphia (former Arguto Bearing Co.)
- 1801 N. Howard - Philadelphia (former Star Carpet Mill)
- 200 Adams - Scranton (former Stoer & Fister Furniture)
- Gladstone Residences - Pittsburgh (former Gladstone School)
- Letsche School Apts. - Pittsburgh (former Letsche E.S.)
- Max Levy Bldg. Apts - Philadelphia (former Levy Autograph Co.)
- Poth Brewery Lofts - Philadelphia (former Poth Brewery)
- The Delbar - Perkasie (former Dallanbarger Mfg. Co.)
- The Rayburn - Philadelphia (former Pep Boys HQ)
- The Willows - East Greenville (former SOS Products Bldg.)

SOUTH CAROLINA

- Zimmerli Center - Spartanburg (former Twichell Auditorium)

TENNESSEE

- Kemmons Wilson HQ - Memphis (former Spaghetti Whrse.)
- Marine Residence - Memphis (former U.S. Marines hospital)
- Melrose Lofts - Memphis (former Melrose High School)
- Sheahan Pumping Station - Memphis
- The Sanctuary - Clarksville (former Civil War hospital)

TEXAS

- Childress County Courthouse - Childress
- Commons at St. Anthony's - Amarillo (former St. Anthony's Hosp.)
- Mitchell County Courthouse - Colorado City

UTAH

- A & Z Building - Salt Lake City (former A & Z Produce)
- Post District Barrell and Annex Bldgs. - Salt Lake City

VIRGINIA

- Virginia Military Academy Shipp Hall - Lexington
- Virginia Military Academy Preston Library - Lexington
- Whitefield Commons - Arlington (former Windsor Apts.)

WASHINGTON DC

- Old Miner Elementary School

WEST VIRGINIA

- Interwoven Lofts - Martinsburg (former Interwoven Mill)

WISCONSIN


- Berkshire Sheboygan Falls Senior Apts. - Sheboygan (former Sheboygan Falls Middle School)
- Brass Works Apts. - Wheeling (former Borg Corp. Bldg.)
- Brooke Street Lofts - Fond du Lac (former Northern Casket Co.)
- Cabrini Lofts - Oshkosh (former St. Francis Cabrini School)
- Crescent Lofts - Appleton (former Post-Crescent Newspaper)
- Eagle Knit Bldg. - Milwaukee (former Eagle Knit Mills)
- Riverside Lofts - Jefferson (former Foremost Bldgs.)
- Spartan Lofts - Sparta (former Sparta High School)
- Streetcar Lofts - Milwaukee (former Underwriters Exchange)
- Tenor High School - Milwaukee (former Sentinel Bldg.)
- Thirty-Seventh Street School Apts. - Milwaukee (former 37th Street School)
- The Wheatly - Milwaukee (former Phillis Wheatly School)
- Verdigris - Milwaukee (former Sentinel-Journal Communications Bldg.)

HISTORICAL SERIES

Find more information on Quaker windows and doors



 www.QuakerCommercialWindows.com

 1-800-347-0438

 commercial@quakerwindows.com



Made in America: All Quaker products are designed and manufactured in the United States at our state-of-the-art facilities in Eldon, MO (above) and Freeburg, MO.



September, 2024 V4



credit: Chicago Yimby / chicagoyimby.com

On the cover:

LAWSON HOUSE (FORMERLY LAWSON YMCA)

Chicago, IL Built: 1931

Windows: Single Hung

When built, this magnificent 24-story building was a YMCA. It was named after Victor Lawson, a newspaper editor and major donor to Chicago's YMCA program. For decades, it provided housing and services to men of all ages and backgrounds. Developers began a \$120 million restoration project in 2022 and Quaker's historically-correct windows fit perfectly into the plan. Today, Lawson House has been fully revived, offering housing plus residential amenities and services to low-income or homeless men and women.